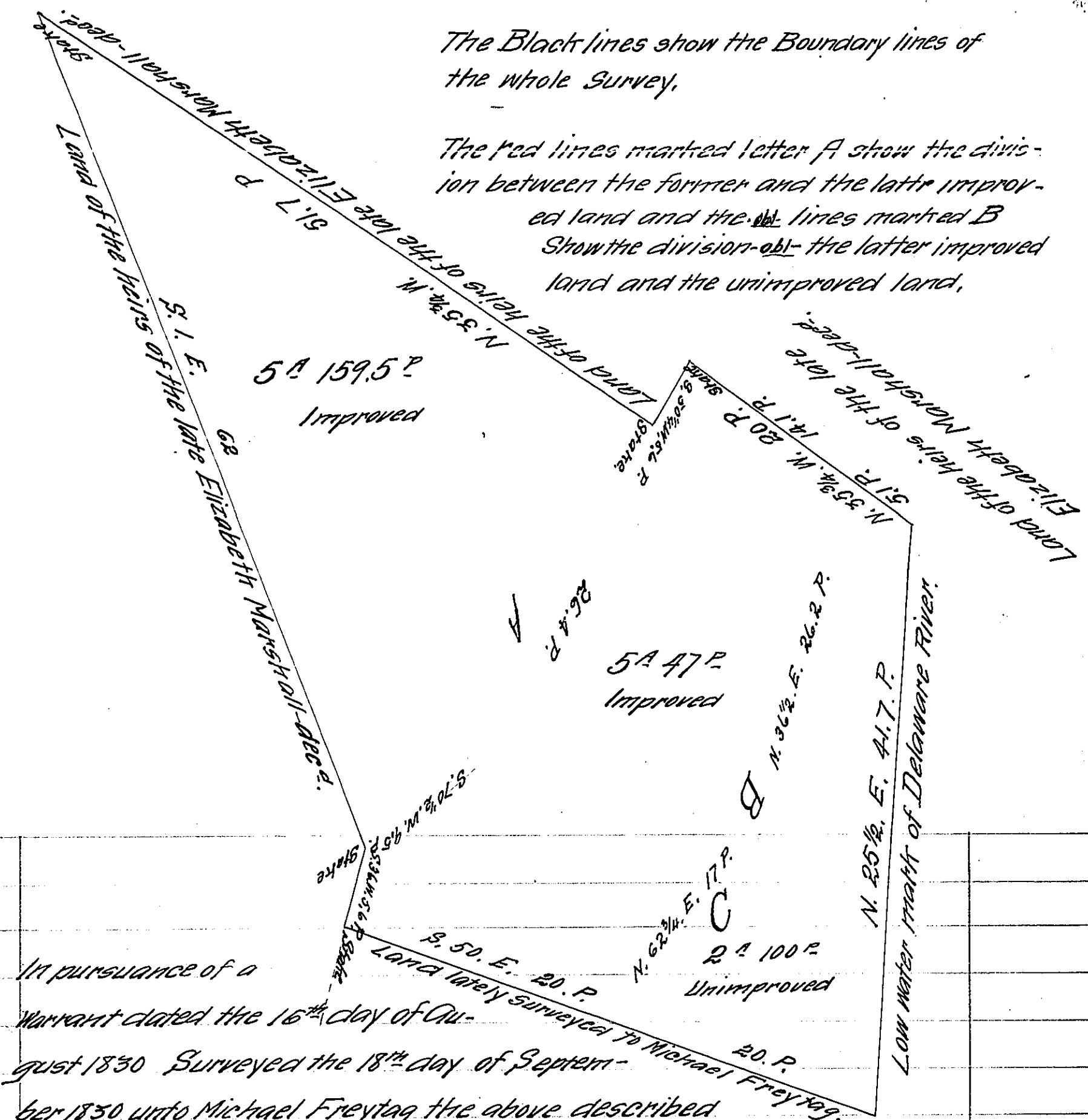


The Black lines show the Boundary lines of the whole Survey.

The red lines marked letter A show the division between the former and the latter improved land and the ~~the~~ lines marked B show the division ~~of~~ the latter improved land and the unimproved land.



In pursuance of a Warrant dated the 16<sup>th</sup> day of August 1830 Surveyed the 18<sup>th</sup> day of September 1830 unto Michael Freytag the above described tract of land Situate in Moyamensing township in the County of Philadelphia being partly improved and partly unimproved, the triangular part marked letter A containing five acres & 159.5 perches has been improved seventy years and the part marked letter B containing five acres & 47 perches has been improved twenty five years and the part marked letter C containing two acres and 100 perches is unimproved making in the whole survey thirteen acres and one hundred and 46 perches.

Jacob Spangler Esquire. }  
 Surveyor General of Penna }  
 David Coombs D.S.

IN TESTIMONY that the above is a copy of the original remaining on file in the Department of Internal Affairs of Pennsylvania, made conformably to an Act of Assembly approved the 16th day of February, 1833, I have hereunto set my Hand and caused the Seal of said Department to be affixed at Harrisburg, this twelfth day of January 1911.

*Henry Howick*  
 Secretary of Internal Affairs.